

The Vision

We Believe and Know

Graphics are for Visualization Purposes Only
Designed in-house by the Team Chew Campaign

Greater Toronto

Greater St. Catharines

Greater Golden Horseshoe

Greater Erie

Greater Ontario

The Vision

We Believe and Know

Graphics are for Visualization Purposes Only
Designed in-house by the Team Chew Campaign

Lake Huron

Georgian Bay

Guelph



Lake Simcoe

Green Belt

Greater Golden Horseshoe

Lake Erie

Lake Ontario

Guelph is

a Distinct City in the Greater Golden Horseshoe
with strategic access and proximity to

Graphics are for Visualization Purposes Only
Designed in-house by the Team Chew Campaign



Tobermory and Port Dover



Toronto Pearson Airport



Kitchener-Waterloo



Toronto



Niagara Falls



Guelph is

located uniquely outside the GTA and K-W urban centres

Graphics are for Visualization Purposes Only
Designed in-house by the Team Chew Campaign

Kitchener-Waterloo

Guelph

Greater Toronto Area

Lake Ontario

TEAM KEN YEE
CHEW

Guelph is

located uniquely outside the GTA and K-W urban centres

Graphics are for Visualization Purposes Only
Designed in-house by the Team Chew Campaign



Guelph is

a Thriving City with untapped potential

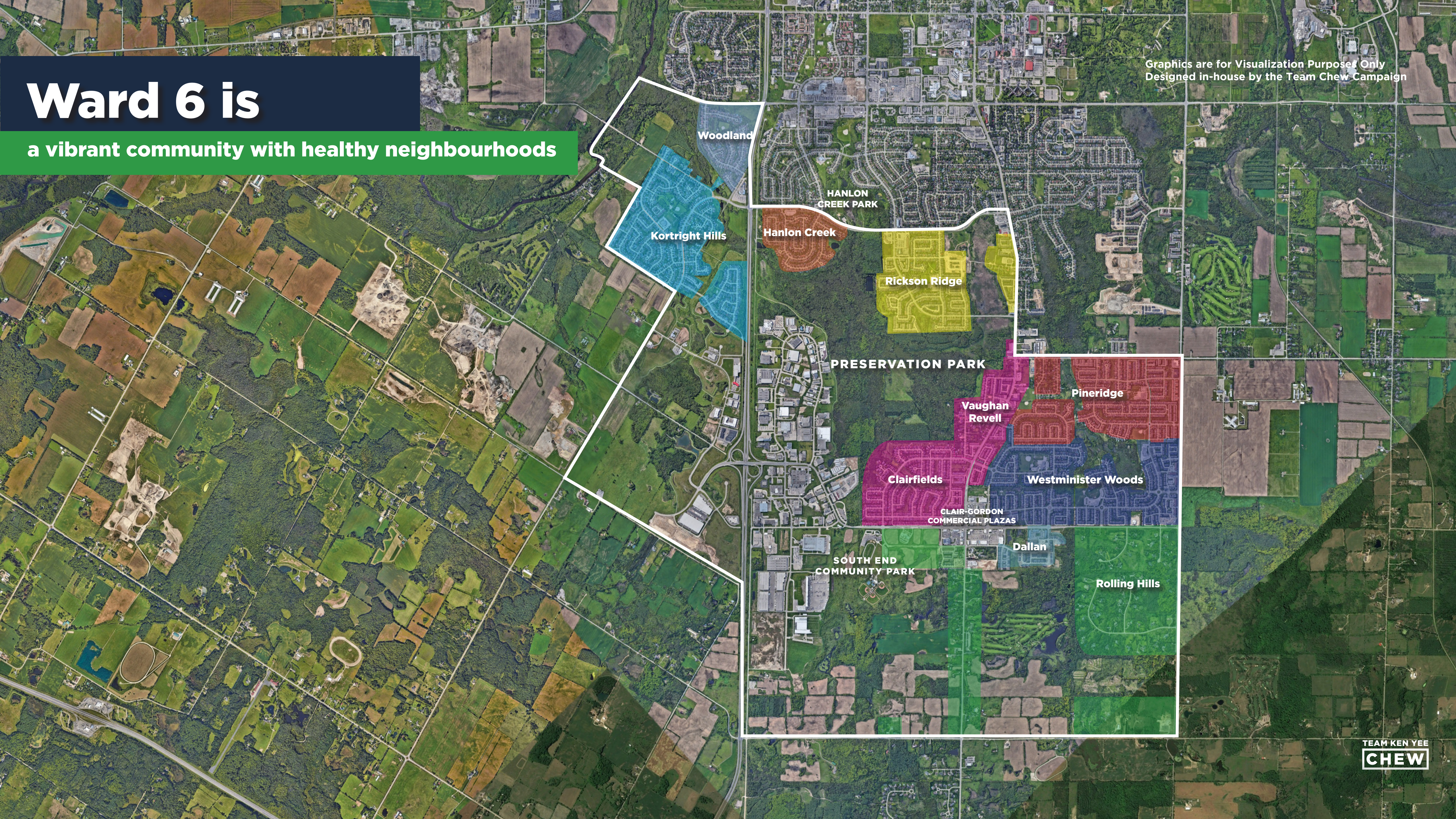
7-20-2022
Graphics are for Visualization Purposes Only
Designed in-house by the Team Chew Campaign



Ward 6 is

a vibrant community with healthy neighbourhoods

Graphics are for Visualization Purposes Only
Designed in-house by the Team Chew Campaign



Woodland

HANLON CREEK PARK

Kortright Hills

Hanlon Creek

Rickson Ridge

PRESERVATION PARK

Pineridge

Vaughan Revell

Clairfields

Westminster Woods

CLAIR-GORDON COMMERCIAL PLAZAS

Dallan








SOUTH END COMMUNITY PARK

Rolling Hills

Ward 6 is

a centre for enhanced quality of life and livability

Graphics are for Visualization Purposes Only
Designed in-house by the Team Chew Campaign

-  **Age Friendly Neighbourhoods**
-  **Safe Streets and Open Spaces**
-  **Housing Diversity**
-  **Local Playground and Parks**
-  **Sports and Recreation**
-  **Natural Heritage System**
-  **Health Facilities and Services**
-  **Education**
-  **Shopping Centres**
-  **Employment**
-  **Transit Corridor**
-  **Cyclist Network**
-  **Pedestrian Trail Network**



Icons from <https://www.planning.vic.gov.au/policy-and-strategy/planning-for-melbourne/plan-melbourne/20-minute-neighbourhoods>

Ward 6 is

the largest and fastest growing ward in the city

Guelph Population

Guelph Total: 95,821 residents

Ward 6*: 18,381 residents

Growth: 19.2%



Graphics are for Visualization Purposes Only
Designed in-house by the Team Chew Campaign

1996



*Statistics Canada Census Tract 001.01/02/04 (This covers areas in the Hanlon Creek that extend out of present day Ward 6)
This is the most accurate data that covers the Ward 6 area. Stats in the census numbers includes built-up communities north of Kortright to Stone Road and College Ave W. This represents nearly half of the population in the city (44%)

Ward 6 is

the largest and fastest growing ward in the city

Graphics are for Visualization Purposes Only
Designed in-house by the Team Chew Campaign

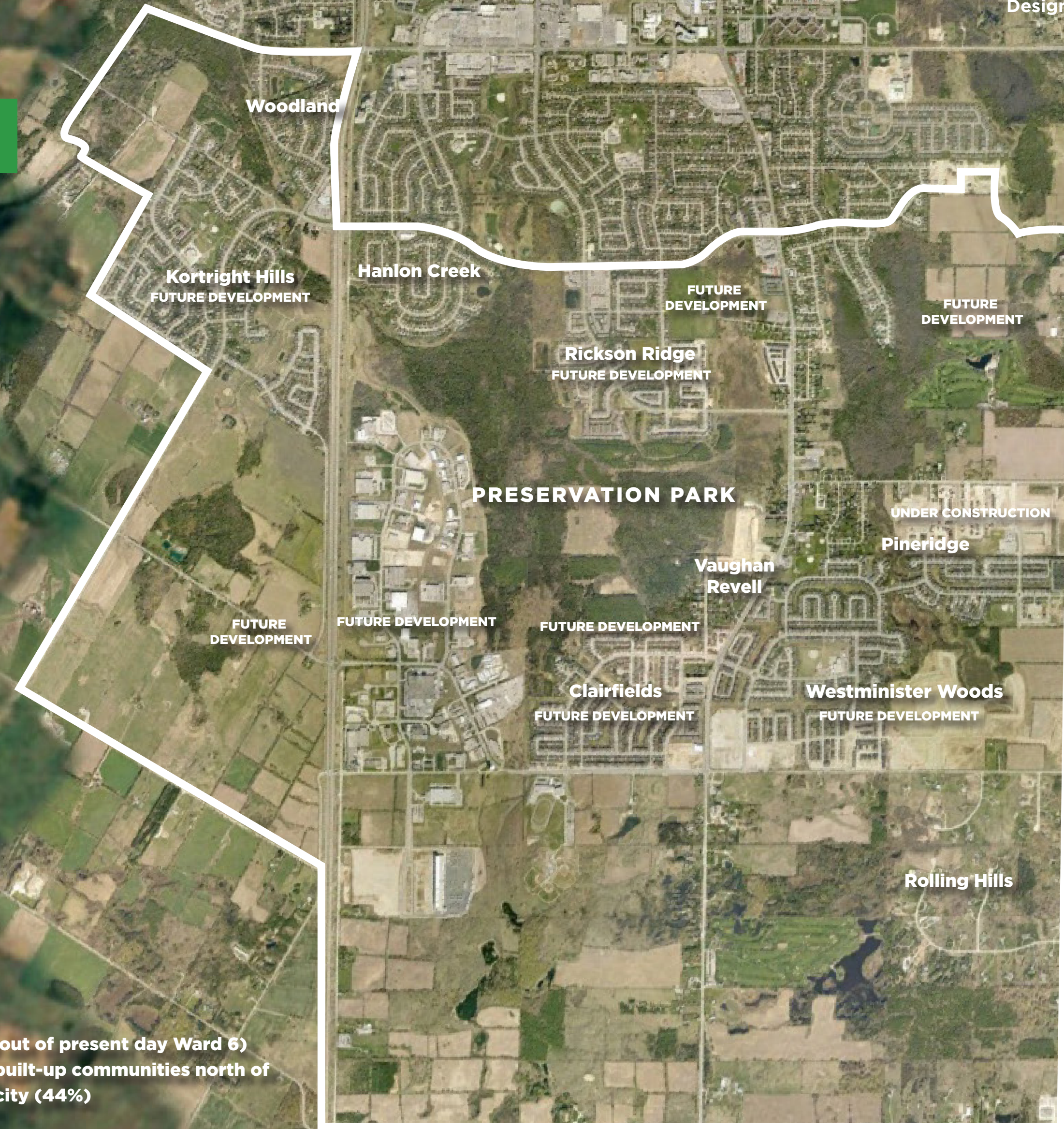
2006

Guelph Population

Guelph Total: 114,943 residents

Ward 6*: 30,315 residents

Growth: 31.6%



*Statistics Canada Census Tract 001.01/02/04 (This covers areas in the Hanlon Creek that extend out of present day Ward 6)
This is the most accurate data that covers the Ward 6 area. Stats in the census numbers includes built-up communities north of Kortright to Stone Road and College Ave W. This represents nearly half of the population in the city (44%)

Ward 6 is

the largest and fastest growing ward in the city

Graphics are for Visualization Purposes Only
Designed in-house by the Team Chew Campaign

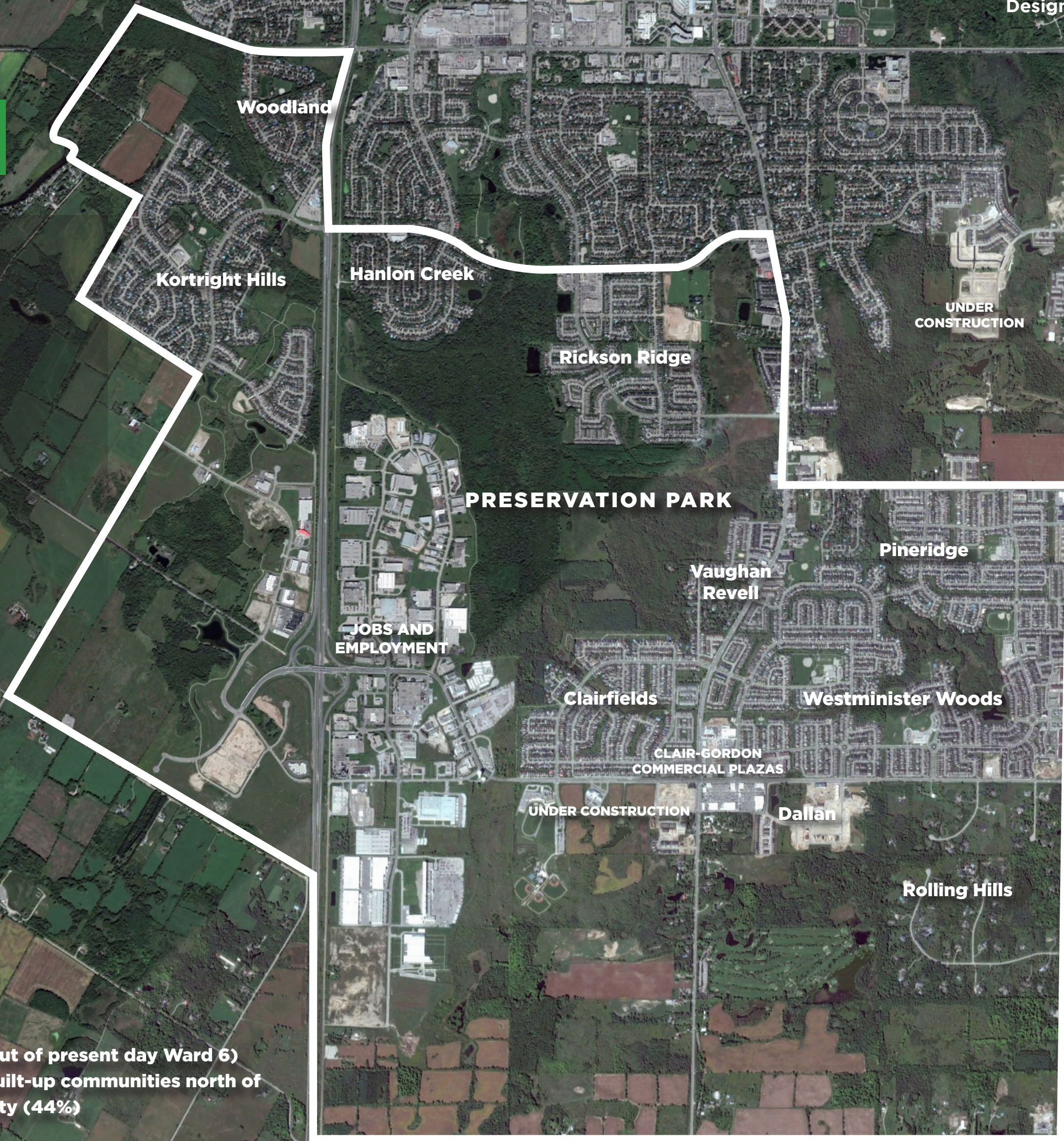
2016

Guelph Population

Guelph Total: 131,795 residents

Ward 6*: 37,785 residents

Growth: 39.4%



*Statistics Canada Census Tract 001.01/02/04 (This covers areas in the Hanlon Creek that extend out of present day Ward 6)
This is the most accurate data that covers the Ward 6 area. Stats in the census numbers includes built-up communities north of Kortright to Stone Road and College Ave W. This represents nearly half of the population in the city (44%)

Ward 6 is

the largest and fastest growing ward in the city

Graphics are for Visualization Purposes Only
Designed in-house by the Team Chew Campaign

2021

Guelph Population

Guelph Total: 143,740 residents

Ward 6*: 42,570 residents

Growth: 44.4%

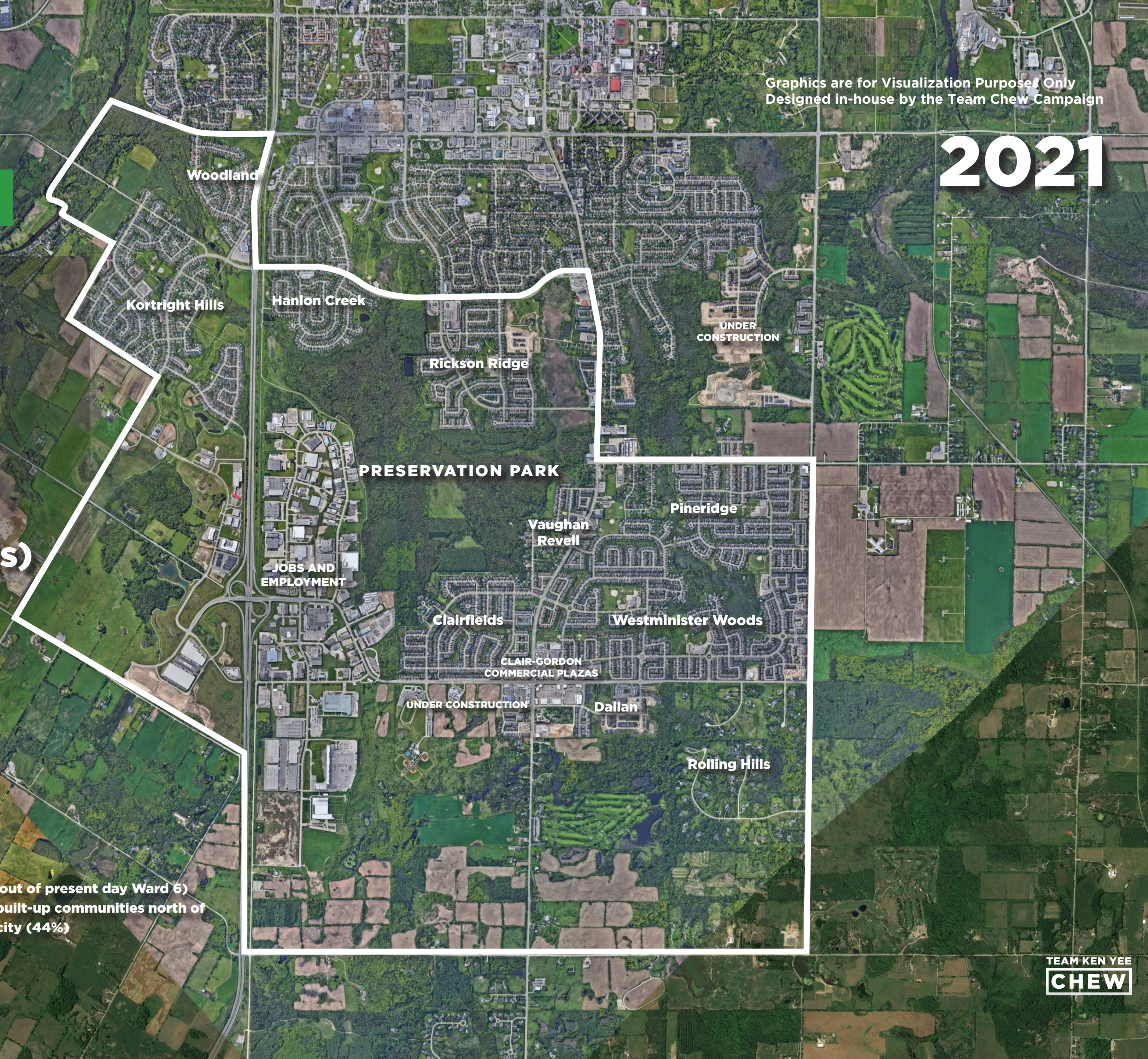


Total Growth from 1996-2021 (25 years)

Guelph Total: 47,919 increase at 2% growth/year

Ward 6 Total: 24,185 increase at 5.3% growth/year

*Statistics Canada Census Tract 001.01/02/04 (This covers areas in the Hanlon Creek that extend out of present day Ward 6)
This is the most accurate data that covers the Ward 6 area. Stats in the census numbers includes built-up communities north of Korthright to Stone Road and College Ave W. This represents nearly half of the population in the city (44%)



We want to address

short and long term priorities with unity politics and strong consensus leadership



**City Transportation
& Infrastructure**



**Safe Neighbourhoods
& Urban Development**



**Environmental Protection
& Quality of Life**



**Employment
& Affordability**